

東京

TŌKYŌ

SODA SIPHON



DIE SIPHON MANUFAKTUR

EN



OUR PHILOSOPHY

We made it our mission to revive classic soda culture.

Each of our siphons is made to serve its buyer, as well as the generations following him. Our hand restored models have been in use for four generations – equally, this Tokyo Soda Siphon is designed and engineered to last a lifetime.

OUR PROMISE

Each one of our siphons is as unique as its new owner - and you will receive the service to match. You will get a 5 year warranty and we will continue to provide you with repairs and spare parts at fair a price anytime thereafter. That is our promise and we will stand by it with our seal.

ABOUT US

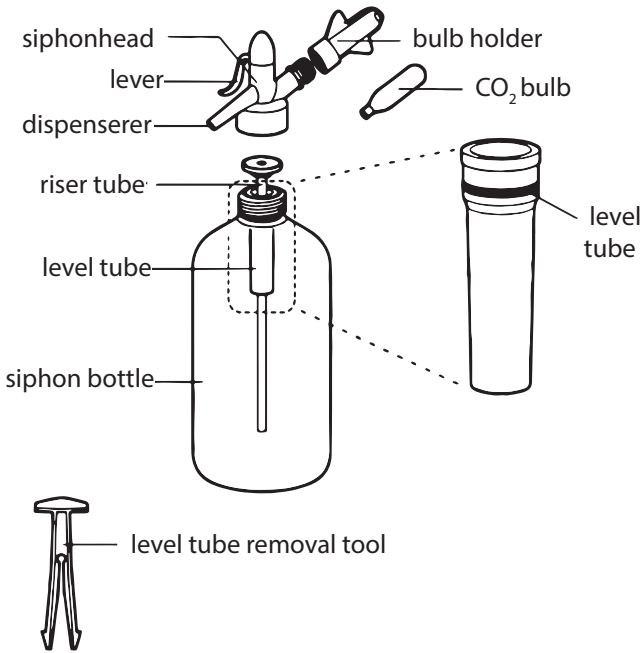
We - cocktail and bar enthusiasts - founded the Siphon Manufaktur in 2011. Since then, our modest enterprise has grown steadily and is now recognised by many of the world's leading liqueur companies.

S A F E T Y

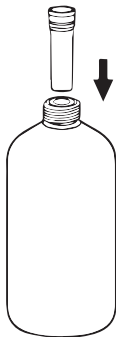
We hope you will enjoy your Tokyo Soda Siphon. It is simple to use as long as you respect the following safety notices:

- Thoroughly rinse the siphon with hot water before using.
- Never use more than one capsule per refill.
- Do not use the siphon without the level tube.
- Keep the siphon out of reach of children.
- Make sure the siphon is entirely depressurized before opening the container.
- Only use your siphon with water.
- Container is pressurized; handle with care. Do not wash your Siphon in the dishwasher.
- Do not expose your siphon to temperature below 0 °C, or above 40 °C.
- Do not continue using your Siphon if you suspect a defect.
- Let a specialist take care of repairs.

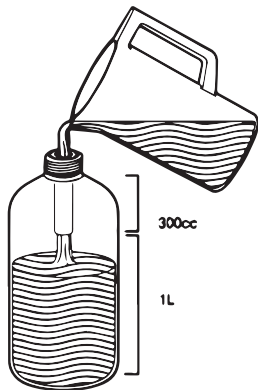
HOW TO USE



1



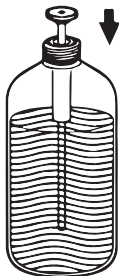
2



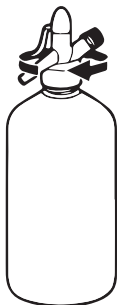
Insert the level tube into the bottle. You should hear and feel it click into place when the tube and top of the bottle are level.

Fill the bottle until water spills over the top.

3



4



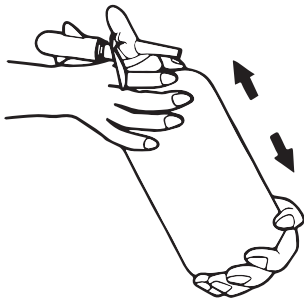
Insert the riser pipe into the bottle.

Screw the siphon head onto the bottle and make sure it sits tight.

5



6



Place a CO₂ bulb in the bulb holder and screw in onto the thread. You will hear gas enter the bottle; the siphon is now pressurized.

Vigorously shake the Siphon several times.

7



Remove the bulb holder and bulb from the thread. You will hear a short hiss.

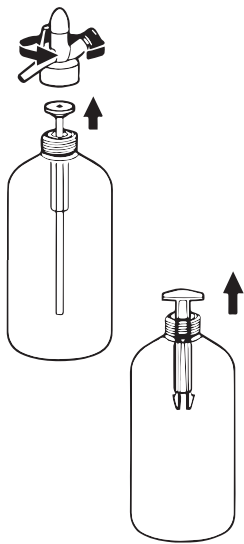
8



The Siphon is now ready for use. Handle the lever carefully when drawing your first glass of soda.

C L E A N I N G

0



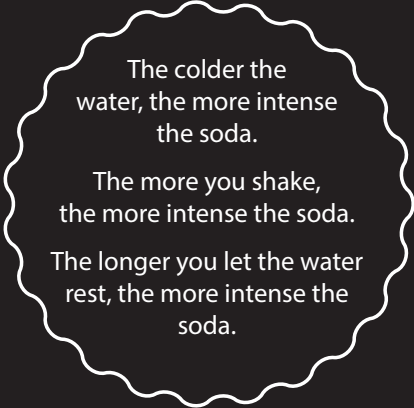
Use the enclosed tool to remove the level tube.

Regularly rinse the siphon with clear, warm water. Do not use any scratching fabric or apply scouring agent when cleaning the bottle.

If you do not refill the Siphon right after use, make sure to rinse and dry the parts separately before re-assembling the Siphon.

Do not wash your Siphon in the dishwasher.

For optimal functionality, we advise the use of CO2 bulbs made by NTG Japan, although other makes are compatible.



The colder the
water, the more intense
the soda.

The more you shake,
the more intense the soda.

The longer you let the water
rest, the more intense the
soda.

kontakt@siphonmanufaktur.de
www.siphonmanufaktur.de
Frasima GmbH - 65719 Hofheim - Germany